

L.V. Systems & Solutions

Residential Components &
Distribution Boards

Home & Building Automation

Industrial Breakers

General Purpose Enclosures

System Enclosures

Control & Automation



GE imagination at work

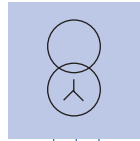
A complete offer for Low Voltage applications



Distribution boards

SEN Plus

Rated voltage: up to 690Vac / 600Vdc
Rated current: up to 6300A



Power circuit breakers

EntelliGuard™

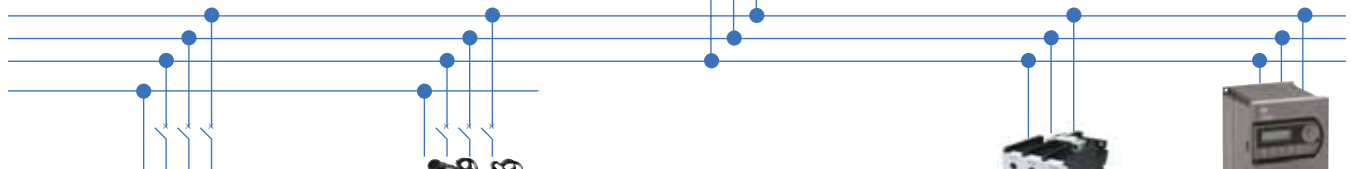
Rating: from 400A to 6400A



Moulded case circuit breakers

Record Plus

Selective and current limiting
Rating: from 8A to 1600A



MCCB'S

acc. EN/IEC 60947-2/UL489



A wide range of **push-buttons**, round and square, in metal and in engineering thermoplastic, illuminated, with or without key,...



Special contactors

for capacitor protection

A full range of **contactors** and auxiliaries, according to EN/IEC 60947-4



A full range of **starters**:
Direct-on-line, Star-Delta, Reversing
ASTAT Softstarters
VAT Variable speed drives
for commercial and industrial motors

A full range of modular DIN-rail devices:

MCB's acc. EN/IEC 60898-1 and EN/IEC 60947-2
Add-on RCD's acc. EN/IEC 61009-1
RCCB's acc. EN/IEC 61008-1
RCBO's acc. EN/IEC 61009-1
Switches, timers, contactors, surge arresters, measurement devices.

Disconnecter loadbreak

switches and changeover switches from 16A to 4000A.

Fused disconnector loadbreak

switches from 32A to 1250A.
According to EN/IEC 60947-3 and UL 508 (listed).

A full range of enclosures

to house your equipment: plastic or metallic, for indoor and outdoor use.
For industrial as well as residential and commercial applications.
According to EN/IEC 60529

Control and Automation Components



Push-buttons

Industrial push-buttons and switches

Series P9 - Ø 22.5 mm

Series 077 - Ø 30 mm

Palm and foot switches.



Starters and inverters

VAT20 / VAT200 / VAT300

Variable speed drives for three phase induction motors up to 475kW

ASTAT S / ASTAT XT

Static soft starters for three phase induction motors up to 1000kW



Contactors

Three ranges, 3 and 4 poles

Series M - from 6 to 9A in AC3

Series CL - from 9 to 105A in AC3

Series CK - from 150 to 825A in AC3

Overload relays

To fit on the three contactor ranges:

Series MT - from 0.11 to 14A setting

Series RT - from 0.16 to 110A setting

Series RT - from 55 to 850A setting

Motor protection devices Surion

Thermal and magnetic protection.

Standard and high breaking capacity.

Rocker and rotary handle operator.



Plug-in relays - Series PRC

Miniature, 8-11 pins and interface



Electronic relays

Multivoltage timers

Detector relays (tesion, intensity, liquid level, etc.) and control and protection relays



Industrial Breakers



Record Plus

Moulded case circuit breakers

Selective and current limiting

- Frame FD up to 160A
- Frame FE up to 250A
- Frame FG up to 630A
- Frame FK up to 1600A

Breaking capacities from 22kA up to 150kA.
In 3 and 4 poles, fixed or withdrawable versions.
For line, motor and generator protection.
In accordance with EN/IEC 60947-2



EntelliGuard

Power circuit breakers

Uncompromising, fast and selective

- Envelope 1
400A to 2000A - 50kA & 65kA

- Envelope 2
400A to 4000A - 50, 65, 80 & 100kA

- Envelope 3
3200A to 6400A - 100kA & 150kA

Fixed pattern and withdrawable type.
In accordance with EN/IEC 60947-2



Dilos

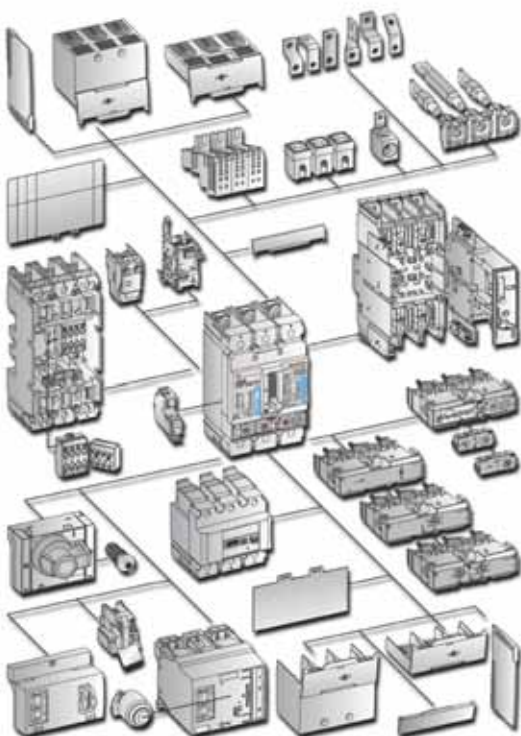
Loadbreak disconnectors

From 16A up to 4000A

Fulos / Fulos Plus

Fused loadbreak disconnectors

From 32A up to 1000/1250A



Gerapid

High speed DC breaker

From 2600A up to 10,000A

A wide range of models with rated voltages up to 3900V



General Purpose Enclosures



ARIA

Multipurpose polyester cabinets

□ IP66 - IK10
 UL - CSA - AS
 Seven sizes, from 315 x 215 x 170 mm up to 1035 x 835 x 300 mm.
 In self extinguishing and halogen-free polyester. Maintenance-free and corrosion-resistant.



PolySafe

Multipurpose polyester cabinets

□ IP65 - IK10 - UL - CSA
 14 standard dimensions, from 500 x 500 mm up to 1250 x 1000 mm.
 One depth: 320 mm.
 Cabinets are standard factory assembled (empty or equipped).



APO

Modular polyester boxes

□ IP67 - IK10
 UL - CSA - AS - Lloyd's
 Nine basic enclosures from 185 x 150 x 130 mm up to 600 x 600 x 175 mm.
 Greater depth is obtained by depth extension frames.



MultiBox

Small multipurpose boxes

□ IP66 - IK07/08 - cUL
 11 basic sizes, from 65 x 65 mm up to 361 x 254 mm.
 With 5 cover depths.
 Made of polystyrene or glass-fibre reinforced polycarbonate.



MultiBox Xtra

Medium sized multipurpose boxes

□ IP66/IP67 - IK08
 6 basic sizes, from 300 x 200 mm up to 600 x 400 mm.
 4 different depths.
 Made of strong and reliable polycarbonate or ABS. For indoor applications.



MultiCab

Medium sized multipurpose cabinets

□ IP65 - IK08
 5 basic sizes, from 300 x 200 mm up to 600 x 400 mm.
 3 different depths.
 Made of strong and reliable polycarbonate or ABS. For indoor applications.



EH

The widest range in the world IP23 to IP54

Cabinets for underground cable distribution.
 More than 30 enclosures, in various configurations: DIN and non-DIN size, with double compartments, with increased depth, with front and rear doors. Providing solutions to various applications.



UC-Cabinet

Underground connection cabinet

5 standard configurations.
 32A up to 125A outgoing ratings.
 The diving bell principle prevents all flood damage.



System Enclosures / Distribution Boards



VMS

Modular enclosures system
Modular enclosures of glass-fibre reinforced polycarbonate.
□ IP65 - IK08
According to IEC 60439-1
Modular dimensions in increments of 100 mm in height and width, in five sizes:

320 x 220 mm	640 x 320 mm
320 x 320 mm	640 x 440 mm
440 x 320 mm	



QuiXtra™ 630

Low voltage distribution board for commercial and industrial environments.
□ IP43
According to IEC 61439-2
Range of 24 different enclosures:
9 heights, from 450 up to 1800 mm
3 widths: 364, 660 and 875 mm
1 depth: 250 mm
Rated operational voltage: 415V
Rated current up to 630A



Modula Plus

LV distribution boards for industrial and commercial applications.
According to IEC 60439-1
Rated voltage: 690V - 50/60Hz
Rated current up to 4000A.
Range of floor standing sheet steel system enclosures offered in kit-form, combining both flexibility and ease of assembly with the reliability of a development dedicated for use in LV distribution.



SEN Plus

A comprehensive range of low voltage switchgear applications:

- withdrawable and fixed power centres with air circuit breakers
- distribution panels with fully withdrawable or fixed versions for MCCB's and fuse switches
- motor control centres with fully withdrawable or fixed technique for fused/fuseless motor starter applications

Residential Components & Distribution Boards



Redline

MCB's

Miniature circuit breakers
From 0.5 to 125A - 1 to 4P configuration.
From 3kA to 50kA breaking capacities.
According to EN/IEC 60898-1 and EN/IEC 60947-2

Add-on RCD's

Add-on residual current devices for MCB's.
For 2 to 4 poles MCB's, 30 up to 1000mA.
According to EN/IEC 61009-1



RCCB's

Residual current operated circuit breakers without integral overcurrent protection. From 16 to 100A and 10mA to 1000mA. According to EN/IEC 61008-1 and BS EN 61008-1



RCBO's

Residual current operated circuit breakers with integral overcurrent protection.
From 4 to 40A and 10mA to 300mA, 1P+N. According to EN/IEC 61009-1



Energy control and comfort functions

Modular switches and push-buttons, impulse switches, contactors, time switches, time relays, transformers, measurement devices, surge arresters, ...



Fix-o-Rail

Insulated enclosures

2 to 144 modules
Surface mounting and flush mounting.



Fix-o-Rail 150

Metallic enclosures

4 to 72 modules
Surface mounting.



Modular 200

Type A and B, 3P+N

MCB distribution boards

2 to 144 modules
Surface mounting and flush mounting.



Junction boxes

Flex-o-Box Junior - 2.5 mm² - □ IP65
Flex-o-Box - 6 mm² - □ IP65
Series 55 - 10 up to 25 mm² - □ IP66
Terminal blocks/clamps.

Home & Building Automation

GE Energy Industrial Solutions



Industrial Solutions (formerly GE Power Protection), a division of GE Energy, is a first class European supplier of low-voltage products including wiring devices, residential and industrial electrical distribution components, automation products, enclosures and switchboards. Demand for the company's products comes from, wholesalers, installers, panel-board builders, contractors, OEMs and utilities worldwide.

HabiTEQ™

Solutions

- Intelligent pre-wired "plug and play" automation distribution board
- Using a selection of components optimized for your living or working space
- Track and control energy efficiency
- Free software to design your automation solution

8 types of pre-wired enclosures to suit every requirement
From 72 up to 432 modules



HabiTEQ™

Automation components

- One communication system with a 2-wire BUS
- Optimal, energy efficient interaction of the subsystems
- A large number of interactive functions can be realised:
lighting control - heating/ventilation control - climate control -
shutter control - safety monitoring - energy management -
central automation

A single and simple integrated system

www.ge.com/ex/@industrialsolutions

Customer service
GE Industrial Solutions
Váci út 77
H-1340 Budapest
Hungary
Tel. +361 447 6046
Fax +361 447 5060
E-mail: mea.export.consind@ge.com
www.gepowershop.com

General Electric International, Inc.
1101, City Tower 2, Sheikh Zayed Road
P.O. Box 11549, Dubai
United Arab Emirates
Tel. 9714 313 1202

GE INDUSTRIAL SOLUTIONS
Nieuwevaart 51
B-9000 Gent - Belgium
Tel. +32/9 265 21 11
Fax +32/9 265 28 00
E-mail: gepcbel@ge.com



GE imagination at work